

**WELCOME PARENTS!**

**FUGE CAMP**

**JULY 2-6, 2023**

[chetsstudents.com/camp](https://chetsstudents.com/camp)

**ALL PARENTS  
SCAN THIS QR  
CODE BEFORE  
THE MEETING:**



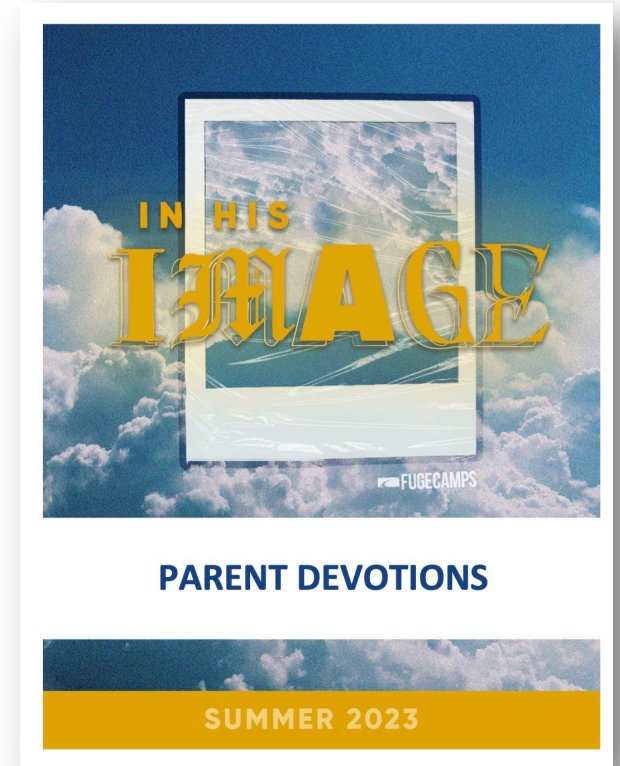
- **PLEASE CONTACT YOUR CAMPUS STAFF MINISTER FIRST IF YOU NEED TO CONTACT YOUR CHILD BECAUSE OF AN EMERGENCY SITUATION.**
  - THIS ALLOWS US TO PROPERLY PREPARE AS A STAFF TO SHARE IMPORTANT INFORMATION OR IF COUNSELING IS NEEDED.
  - The staff contact list is on the parent info website.

## **WHAT WILL YOUR CHILD BE DOING THIS WEEK?**

- Graded Bible studies with students from other churches
- Recreation
- Afternoon track times
- Worship
- Church group time
- Camp-wide fellowships

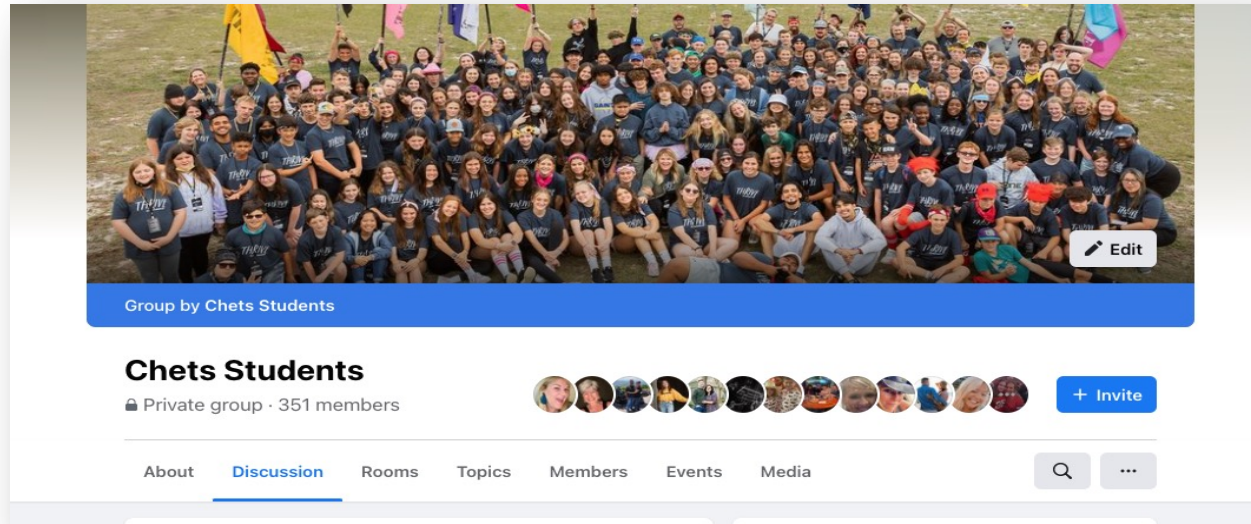
## CAMP PARENT DEVOTIONS

- You'll be prompted with a reply text to enter your name and then you'll be added to the list.
- GO TO **CHETSSTUDENTS.COM/CAMP** AND TAP ON THE PARENT DEVO BUTTON. (You can either get a printed copy of the devotions or have them texted to you each day of camp.)



# SOCIAL MEDIA:

- **INSTAGRAM: @chetsstudents**
- **Facebook – Chets Student Group**



## CAMP TRAVEL FORM

- Only if you have pre-approved plans to drop your student off at camp or pick them up from camp.

[chetsstudents.com/camp](https://chetsstudents.com/camp)

**FILLING OUT FORM DOES NOT GUARANTEE  
PLANS. EXACT PICK-UP/DROP-OFF  
ARRANGMENTS MUST BE APPROVED BY  
CHETS STAFF.**

## **SCHEDULE**

- **Be at Chets Hodges campus for check-in at 6:00am**
- **Expected approximate arrival *home* at the Chets Hodges campus on Thursday at 7:00pm**



## DRESS CODE

- Parents, please help us with dress code.
  - We live in a beach community, but Fuge Camp is not the beach.
- Closed toe shoes required (No Crocs at Rec)
- **Modest** shorts (no super short shorts please)
  - Parents – please do not pack these and make our volunteer leaders DO NOT have to be the “bad guys.”
- Look at the “do not pack” list on the dress code page.

# WHAT TO PACK . . .

## TOP THINGS FORGOTTEN!

SOAP

DEODORANT

**BLANKETS**

SUNGLASSES

WATER BOTTLE

TOOTHBRUSH

SPENDING MONEY

SHAMPOO

**PILLOW**

**BATH TOWEL**

BIBLE

TOOTHPASTE

HAT

## WHAT NOT TO PACK . . .

- **Vape pens**, alcohol, illegal drugs, weapons – including pocketknives, etc.
  - ***If any of these items are found on your student, they will be immediately sent home at the parent's expense and asked that you pick them up.***
- Prank items (Pranks are not allowed.)
- Gaming devices

# RECOMMENDED SPENDING \$\$\$ . . .

- **\$50-\$75**
  - Snacks at the “Nibble Nook”, Fuge Camp store, **missions offering**, travel meals to and from camp
  - This is just a recommendation.
    - *Chets is not responsible for lost or stolen money.*

# CAMP RULES

- NO INAPPROPRIATE BEHAVIOR
- Cell phone policy - no phones during program times
- Activities – **EVERYTHING IS MANDATORY**
- **You cannot skip Bible study, rec, worship, track times, or nightlife. EVERYTHING ON THE SCHEDULE IS MANDATORY REGARDLESS OF WHAT ANY FUGE STAFFER MIGHT TELL YOUR STUDENT.**
- Housing – no guys/girls in each others' rooms, be in rooms by 11:00pm
- Worship – bring a physical Bible, you can't use your phone.

# **CAMP LGBTQ POLICY**

- **See LGBTQ POLICY form on the parent info page for more info.**
- **Housing will be in your biological birth gender.**
- **Bathrooms are to correspond with your biological birth gender.**
- **All campers should change clothes in private areas. Nudity and disrobing directly in front of other campers are prohibited regardless of gender.**

# **HOUSING / CABIN ASSIGNMENTS**

- **Minimum of 2 Adults per cabin**
- **Keep cabins clean.**
- **Please remove your shower items after showering each time. (limited space for shampoo/soap in the shower)**
- **No moving of the bunk beds or removing the bed rails – they can be broken. Broken items in a room will be the responsibility of the camper's parents.**

# **BUS POLICIES**

- **Leaders load first**
- **Students ride the same bus to and from camp (*this helps us with roll call*)**
- **Keep bus clean (only screw on lid drinks) – no starbucks or soft drinks with pop on lids allowed.**
- **No lying on the floor (safety policy) – every student must have a seat.**



# **FOOD**

- **Breakfast, lunch, dinner provided every day of camp**
- **Major dietary restrictions? – You must make accommodations with Ridgecrest staff personally as there will be almost 2000 campers at this camp.**
- **Dietary restrictions – you may call RCC to inquire about the dining menu at 828-669-8022**

# **SICK POLICY**

- **Drink water!**
- **Can't go back to room alone if sick. An adult can't be alone in the room with you either. You *MUST* stay with the adults in public areas of the camp.**
- **SEE CHETS CHILD PROTECTION SECURITY POLICY IN PARENT PACK.**
- **We can only dispense Tylenol.**
- **Fever/vomiting – will request a parent come pick them up from camp ASAP.**

## TRACK TIMES

- Tracks listed in the parent pack pdf.
- Tracks subject to change and MAY NOT BE AVAILABLE during our week of camp.
- STUDENTS WILL SIGN UP FOR TRACK TIMES AT CAMP.

# MEGA RELAY

Wear any **Teal Colored** Shirt

*This allows our staff to find Chets students in the chaos and crowd for pics/video.*

# FUGE CAMP MISSION OFFERING

*We encourage students to bring some extra money to contribute to the missions offering.*

- See who the missions offering goes to in the parent pack pdf. 100% of all missions offering is given to the sponsored ministry.

## CAMP THEME OVERVIEW

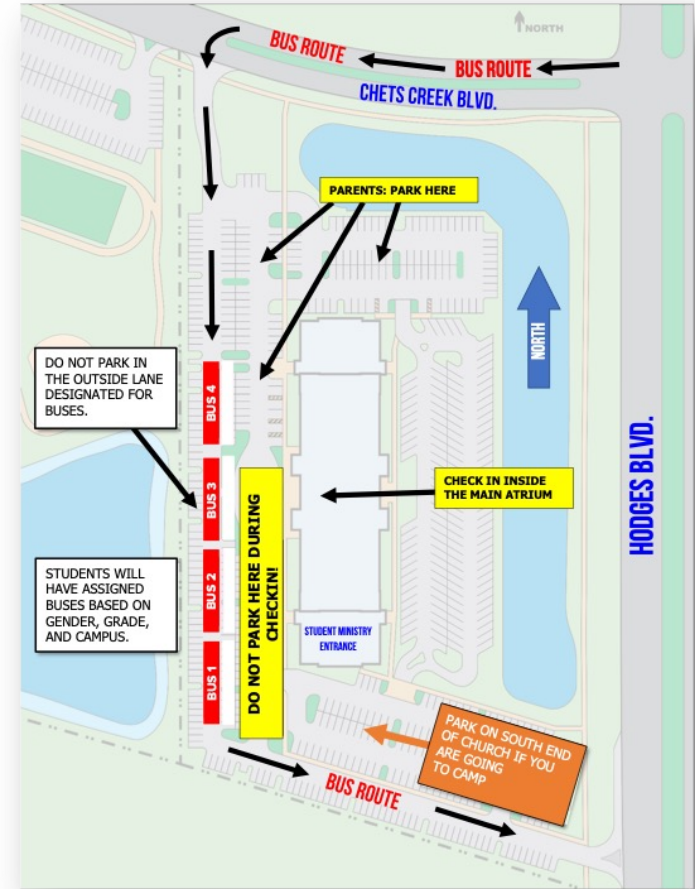
*In His Image*

# CAMP MISSIONS OFFERING

- ***IMB: EMBERA PEOPLE***
- ***NAMB: VERGEL AND KELSEY BROWN (CHURCH PLANTERS)***
- ***MFUGE LOCAL MISSIONS***

# CHECK-IN DAY MAP

- Be at check-in at 6:00am
- Don't park on the outside lane
- Check in & THEN load luggage
- Do not bring luggage inside during the check-in process.





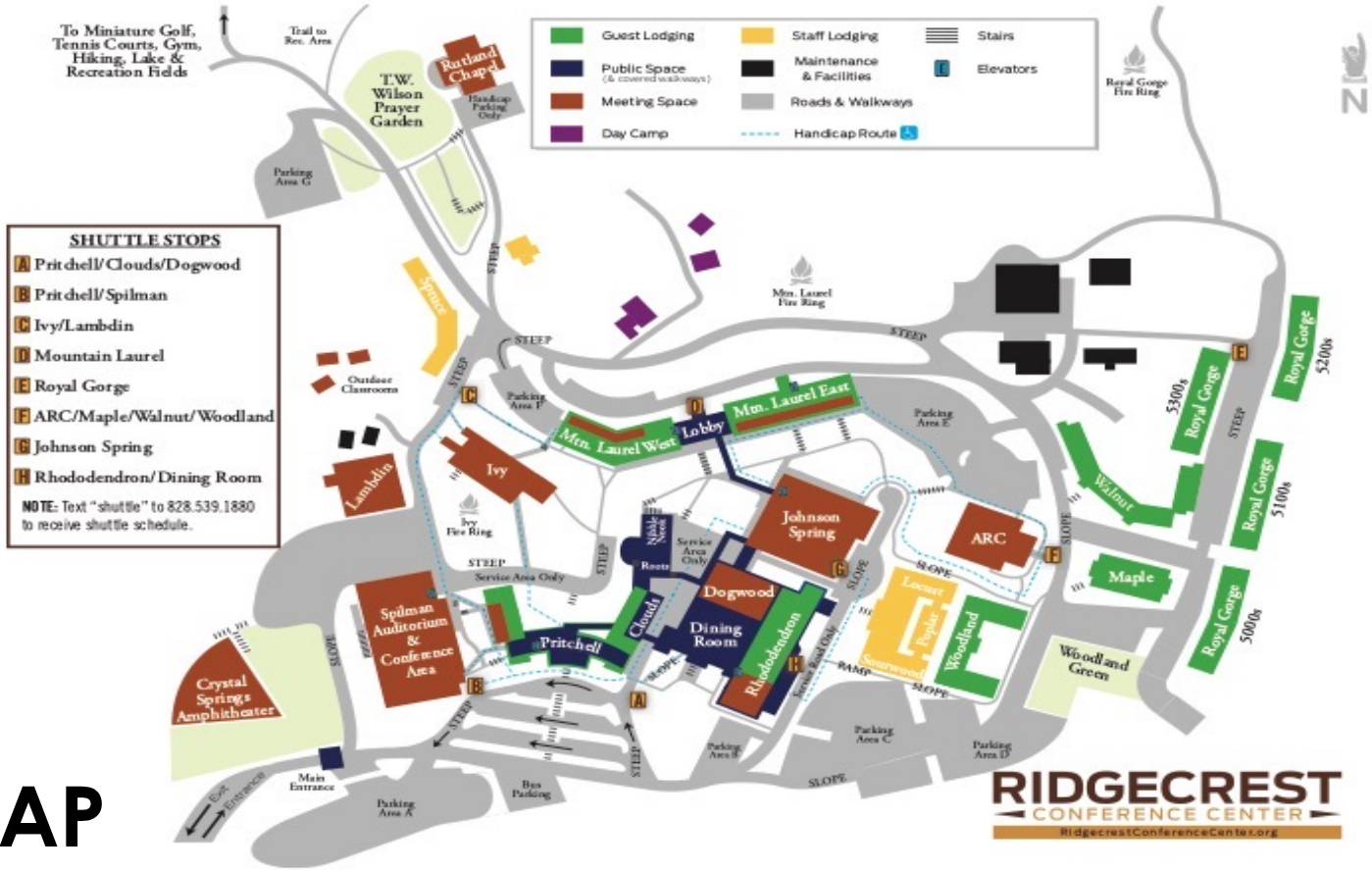
**FINAL BALANCE  
& PAPERWORK WAS DUE:**

**JUNE 1, 2023**

**PLEASE PAY TODAY.**



*SCAN TO GO TO LOG IN TO YOUR  
ACCOUNT & PAY.*



# CAMPUS MAP