



IN HIS
IMAGE

FUGECAMPS

2023 PARENT PACK



SUMMER 2023

PLEASE CONTACT YOUR CAMPUS STAFF MINISTER FIRST IF YOU NEED TO CONTACT YOUR CHILD BECAUSE OF AN EMERGENCY SITUATION.

- **THIS ALLOWS US TO PROPERLY PREPARE AS A STAFF TO SHARE IMPORTANT INFORMATION OR IF COUNSELING IS NEEDED.**

CSM STAFF LEADERS CONTACT INFO

Jeff Tapp

Chets Creek Church Student Pastor
Student Team Leader
870.761.2009

Herbert Beck

NOR Campus Pastor
904.392.9592

Tyler Waugh

SOU Campus Student Minister
904.566.2400

Michelle Hickey

Chets Students Admin Assistant
904.710.7906

Casey Kaplan

Chets Students Worship & Communications Director
478.960.8402

Hope Daughtry

CSM Summer Intern
601.310.6657

HISTORY OF FUGE CAMPS AND ITS NAME

CENTRIFUGE – Established 1979

Centrifuge began in 1979 as a youth camp for students who have completed 6th grade through 12th grade. What started out as a few weeks of Centrifuge camp at a couple of locations has turned into a nationwide student ministry camp experience. Since those humble beginnings more than 40 years ago, over one million people have experienced FUGE Camps! Centrifuge combines small group Bible study with recreation, track times, worship, fellowships, and church group time.

The Name: CENTRIFUGE

A centrifuge is an apparatus which spins solutions, separating the parts as to different weights and densities. To function effectively, a centrifuge must have an immovable center point. As a youth camp, Centrifuge mixes youth and adults from various churches for one week into specialized groups.

Students are spun out into Bible study and recreation groups which affirm them as unique beings created by God and draw them nearer to God who is the immovable center point. At the end of the week, students are brought back together and sent out to make a significant impact on their homes, churches, schools, and communities

WHAT WILL YOUR CHILD BE DOING THIS WEEK?

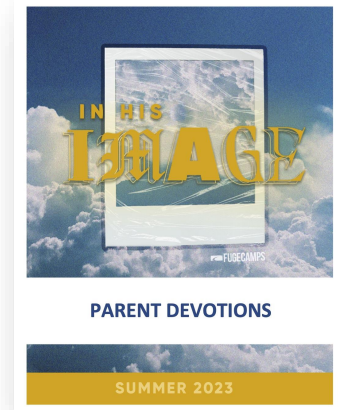
- Graded Bible studies with students from other churches
- Recreation
- Afternoon track times
- Worship
- Church group time
- Camp-wide fellowships

DAILY PARENT CAMP DEVOTIONS

Stay connected with what your students are experiencing in the word at Fuge Camp!

We'll be texting out DAILY DEVOTIONS just for parents!

Each devotion will connect you to what your student is learning at camp with some of the same scriptures they're studying. It'll be a small snapshot into their camp experience.



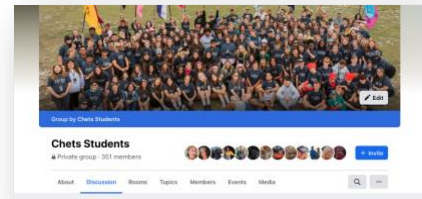
Join the parent devo list here:



Download a paper copy of the devos or sign up to get daily devo texts during the week of camp by tapping on the corresponding button.

Follow us on social media for daily camp pics

- @chetsstudents on Instagram
- Chets Students group on Facebook



To drop-off late or pick up early at Ridgecrest Conference Center, go to chetsstudents.com/camp or scan code & tap on the corresponding button:

NOTE: This drop-off/pick-up **MUST BE APPROVED BY CHETS STAFF** before making plans. Filling out the web form DOES NOT GUARANTEE you can do custom travel arraignments without confirming with Chets Staff first.



CAMP SCHEDULE

Opening Day

1:00 - 4:00 PM Registration
5:00 PM Dinner
7:00 PM Opening Celebration
7:30 PM Students: Bible Study
Adults: Adult Gathering
8:45 PM Worship
10:15 PM Church Group Time
11:00 PM In Rooms

**Be at Chets Hodges Campus for
check-in at 6:00am Sunday!**

Full Day 1

7:00 AM Breakfast
8:00 AM Morning Celebration
9:00 AM Students: Recreation
10:30 AM Students: Quiet Time / Bible Study
Adults: Adult Gathering
12:00 PM Lunch
1:00 PM Track Rally
1:15 PM Track A
2:15 PM Track Rally
2:30 PM Track B
4:00 PM Hang Time
5:00 PM Dinner
7:00 PM Worship
8:30 PM Church Group Time
10:00 PM Hang Time
11:00 PM In Rooms

Day 2 (Program elements prior to this are the same as Full Day 1)

8:30 PM Night Life
9:15 PM Church Group Time
10:30 PM Hang Time
11:00 PM In Rooms

Day 3 (Program elements prior to this are the same as Full Day 1)

10:00 PM Mega Relay – this will be different at Ridgecrest as Mega will be during the day
11:00 PM In Rooms

Closing Day

7:00 AM Breakfast
8:30 AM Students: Bible Study
Adults: Adult Gathering
9:45 AM Closing Celebration
10:45 AM Churches Depart

**ESTIMATED arrival time back
at Chets Hodges Campus:
7:00pm Thursday.**

Note: Schedule subject to change by camp location.

FUGE CAMP DRESS CODE & WHAT TO PACK

While at camp, we ask students and adults to:

- Wear modest shorts. When hands are extended to the back or the front, **fingertips must touch fabric.**
 - **Sleeveless shirts and tank tops are now allowed during daytime activities.** HOWEVER - Shirts with spaghetti straps, open backs or excessive armpit cutouts which expose torso and undergarments are NOT allowed.
 - **Large t-shirts that cover shorts should not be worn.**
- Clothing that is excessively short or tight fitting.
- Wear closed-toe and closed-heel shoes while at recreation and track times and during Mega Relay. **(CROCS ARE NOT ALLOWED DURING REC)**
- Wear modest, one-piece bathing suits or two-piece suits covered with a dark colored t-shirt, if participating in water activities.
- Wear modest shorts, pants, jeans, or dresses for worship. Dresses with spaghetti or small straps, open backs, and excessively short lengths are unacceptable.
- Do not dress in a way that calls attention to underwear (sagging your pants, rolling down your waistbands, etc.) or wear pants or shorts with lettering on the bottom.

Make sure your students do NOT pack anything that:

- Advertises alcohol, tobacco, or illegal drugs.
- Explicitly or implicitly promotes racism, sexism, or hatred of any group or person.
- Explicitly or implicitly refers to sexual actions or situations.
- Has spaghetti/small straps or open back, except for sleepwear.

WHAT TO PACK

- Linens, towels, pillows, blankets
- Water bottle you can refill and carry with you
- Closed-toe, closed-heel shoes (for outdoor activities)
- **Bible**, notepad, and pen
- Toiletries such as toothbrush, deodorant, and shampoo
- Sun protection
- Spending money for snacks, camp store, and missions offering (optional)
- Summer clothing – THINK TWO OUTFITS PER DAY (see dress code)

PARENTS, PLEASE HELP US WITH DRESS CODE! We live in a beach community, but Fuge Camp is NOT the beach.

WHAT NOT TO PACK

- Vape pens, Alcohol, tobacco, illegal drugs, fireworks, water guns, or any kind of weapon including, but not limited to, pocketknives
 - **If any of these items are found on your student, they will be immediately sent home at the parent's expense and asked that you pick them up.**
 - Items that may be used for pranks such as water balloons, shaving cream, silly string
- NOTE:
- **Pranks are not allowed at camp. Your child/family will be charged for any damages or issues related to clean up.**
- iPads, gaming devices, roller blades or skateboards

NOTE: If students bring cell phones, they are not to be out and in use during programming elements: Morning Celebrating, Bible Study, Worship, Night Life, Recreation, and Track Times/Ministry Tracks.

TOP THINGS FORGOTTEN EVERY YEAR!!!

SOAP SHAMPOO
DEODORANT **PILLOW**
BLANKETS BATH TOWEL
SUNGLASSES BIBLE
WATER BOTTLE TOOTHPASTE
TOOTHBRUSH HAT
SPENDING MONEY

RECOMMENDED SPENDING MONEY: \$50-\$75

TRAVEL LUNCH UP: **\$10-\$15**

SLUSHES/ICE CREAM/SNACKS/CLOUDS COFFEE SHOP: \$10-15

FUGE CAMP STORE (CAMP APPARREL/ETC.): \$10-20

MISSIONS OFFERING: \$5-20

TRAVEL LUNCH BACK: \$10-\$15

NOTE: THIS IS JUST A SUGGESTION. WE SUGGEST PACKING AN ENVELOPE WITH MONEY IN IT FOR THURSDAY'S TRAVEL LUNCH TO ENSURE YOUR CHILD HAS MONEY FOR FOOD ON THE WAY HOME.

CHETS IS NOT RESPONSIBLE FOR LOST OR STOLEN MONEY.

FUGE CAMP RULES

INAPPROPRIATE BEHAVIOR

Please note that we take inappropriate behavior seriously. Such activity includes but is not limited to hazing, bullying, aggressive behaviors, and actions deemed sexual harassment or sexual in nature. Some activities that were once thought to be practical jokes may now be considered abuse. Some examples include swirlies, pantsing someone, dog piling, and noogies, just to name a few. Adults and campers should refrain from using any part of their body or an object toward another camper as a prank, sexual advance, or bullying tactic. These actions can lead to hurt and trauma for the victim, as well as legal action. Often these situations happen during free time in the afternoon and after curfew while in the housing areas. Students must be supervised by adults during free time and when in housing areas. If an adult hears commotion coming from a room in the housing area, they need to investigate. Some things start out innocently but can turn to inappropriate activity quickly. Please do all you can to avoid such activities.

CELL PHONES

- The decision of cell phone usage at camp is in the hands of the Group Leader of each church.
- Throughout the week, some elements may allow students and adults to join in via social media (i.e., Twitter, Instagram, Facebook, etc.) However, these opportunities are optional and will not limit the camp experience for those who do not participate.
- Unless instructed by staff, students with cell phones are not allowed to have them out or in use during programming elements: Morning Celebration, Bible Study, Worship, Night Life, Recreation and Track Times/Ministry Tracks. Ringers should be turned to silent or vibrate.

Ridgecrest is a LARGE camp on a mountainside. We encourage students to have a phone when walking to and from program elements during the week. Students WILL NOT BE ALLOWED to have cell phones out during worship, rec, track time, or bible study (see below). BRING YOUR BIBLE, CELL PHONES CAN'T BE USED AS BIBLES.

ACTIVITIES

- Participate in **ALL ACTIVITIES** and be on time.
- Wear closed-toe and closed-heel shoes to recreation.
- Wear nametag at all times.
- Name calling, fighting, bullying, arguing, profanity or any other aggressive behaviors are strictly prohibited at camp. Play safely and use good sportsmanship.
- Always have a buddy. Don't go it alone.

Nightlife is NOT OPTIONAL unless specified by Pastor Jeff. ALL PROGRAMS ON THE SCHEDULE ARE MANDATORY regardless of what any Fuge Staffer might tell you..

FUGE CAMP'S LGBTQ POLICY

- Go to chetsstudents.com/camp and tap on the corresponding button to see Fuge Camp's policy on LGBTQ circumstances.

HOUSING

- Be in rooms by 11:00 PM with lights out no later than 11:30 PM.
- No guys in girls' rooms or hallways and no girls in guys' rooms or hallways.
- No public displays of affection.
- No practical jokes.
- All campers are expected to respect the rights and property of others. Loud noise and similar intrusive behaviors are prohibited.
- Athletic activities such as running, playing and throwing are prohibited in housing areas. These and similar activities are to be done outside.
- Please remove your shower items after showering (limited space in showers)
- No moving bunk beds or removing bed rails.

**PURSUE A RELATIONSHIP WITH
JESUS, NOT A BF/GF.**

CABIN ASSIGNMENTS:

- Typical cabins at RCC sleep 12 (usually 6 bunk beds) – each cabin will house 10 students and 2 adults.
- ADULTS WILL STAY IN CABINS WITH STUDENTS. (Minimum of two adults per room.)
- **Students will be assigned a cabin with their lifegroup (by grade & gender).**

WORSHIP

- Because we desire worship to be reverent and distraction free, we request:
 - No gum, food, or drinks in the worship center.
 - No video or flash photography are allowed before or during the worship service

BUS POLICIES:

- LEADERS WILL LOAD BUS FIRST
- **The bus a student is on is their bus the entire trip – TO AND FROM RIDGECREST**
- Trash bags will be provided. Keep the bus clean! Keep bathrooms clean!
- Any drinks must have a **screw-on lid – (aka bottles) – no open cans/soda or coffee cups.**
- NO LYING ON THE FLOOR – SAFETY PRECAUTION and LIABILITY.

FOOD:

- There will be breakfast, lunch, and dinner served each day in the dining hall.
- There is **almost always** a salad bar and different vegetarian options during each meal. But it isn't guaranteed.
- If your child has major dietary restrictions, **you must make accommodations** by bringing your own extra food. (i.e. Gluten free only options, specific allergy options)
 - You may call Ridgecrest to inquire about the dining menu.
 - (828-669-8022)

SICK POLICY:

- DRINK WATER ... DRINK WATER... EAT ... GET SLEEP ... GET SLEEP!!!!
 - Most "illnesses" students experience at camp are usually due to lack of sleep and dehydration. So GO TO BED and DRINK LOTS OF WATER.
- **Students will not be allowed to go back to their cabins alone if sick.**
- Students will not be allowed to be alone in a cabin with an adult volunteer.
- CHETS CHILD PROTECTION SECURITY POLICY: An adult cannot accompany a student back to their cabin alone, therefore a sick student must rest on site with the adult volunteers.
 - If a student is not running a fever, throwing up, etc. but claims sickness, they will be asked to sit with the adult leaders during program times that they are not feeling well.
 - If a student isn't feeling well, they must give up their phone to their adult cabin leader and rest. ***If they don't feel well enough to participate, then they shouldn't feel well enough to spend time on their phone.***
- If they are running a fever, they will be given Tylenol and parents will be called to come pick them up as soon as possible.
 - We can ONLY DISPENSE TYLENOL. We will not dispense any other medication for sickness.

Track Times POSSIBLY offered at RCC Fuge:

Crafts, Creative Movement, Creative Painting, Drama, Guitar, Percussion, Adventure Track (Kayaking, Paintball, Laser Tag), Hiking, Ropes Track (Zip Lines, Climbing Wall, Ropes Course), Active Track (Basketball, Soccer, Volleyball), Frisbee Track (Disc Golf, Ultimate Frisbee, Misc Frisbee Games), Rec Track (Kickball, Gagaball, Mini Golf), Sport Track (Battleball, Flag Football, Softball), Lawn Games, Total Body Fitness, For Girls Only, Growing Your Faith, How to Survive the Wild, Leadership 101, Acts of Service, Sharing Your Faith, Spiritual Gifts, Sports Ministry, Table Games, The Man Track.

- **Tracks subject to change and CERTAIN TRACKS MAY NOT BE AVAILABLE during our week of camp.**
- **STUDENTS WILL SIGN UP FOR TRACK TIMES AT CAMP.**

Scan to see explanations of Track Times by tapping on the corresponding button.



LOCATION INFORMATION: RIDGECREST CONFERENCE CENTER

1 Ridgecrest Drive, Old US 70 East
Ridgecrest, North Carolina 28770
615.200.7624

FUGE CAMP Office Cell Phone: 615.200.7624
(for emergency use only)

Camp email: ridgecrestfuge@lifeway.com

Camper Mail address

Attn: FUGE Camps
CAMPER/CHURCH NAME
1 Ridgecrest Drive, Old US 70 East
Ridgecrest, North Carolina 28770

Night Life Details

Night Life Details

This summer, we will offer two night life options in addition to Mega Relay. One will be a fun fellowship time and the other will have a mission emphasis.

Night Life 1 (At The Movies)

Night Life at the Movies is a themed outdoor event where students attend as the stars of the camp going out to the movies, except it's FUGE style. Students will get to walk down the red carpet, pose in front of murals and get their picture snapped by the VP of the camp. The pictures will be for a surprise later in the week, so you don't want to miss out!

After arrival, students can bring their own blanket to place on the ground and watch a movie under the stars screened outside. There will be another movie screened inside the auditorium as another option for people wanting more of a theater experience. Popcorn stands and other activities will be happening throughout for students to experience and enjoy the Night Life option together.

Night Life 2 (Images of God)

Images of God Night Life is a missions focused, walk-through experience. Students will visit stations and an immersive room that go in depth on why we care about missions, the Embera people and how to see and love them as image bearers of God. The Night Life will end with an acoustic worship set and dismissed to church group time after.

Mega Relay

In order to find as many Chets Students during Mega Relay to video, **we ask that all students wear either their 2021 Chets Mega Shirt from last year's camp or a [TEAL](#) colored shirt.**

IN HIS IMAGE CAMP THEME OVERVIEW & DAILY FOCUS

IN HIS IMAGE OVERVIEW

Our theme this summer is 'In His Image'. Below is an overview of what your child will be studying in Bible study. This theme will be carried throughout camp programming.

At some point in our lives, we have all struggled with our image - what we look like, who we really are, how we fit in, what we stand for. As humans, we are uniquely created in the image of God. If you believe this to be true, what does that mean for your life and others around you? As Christians, we are called to bear this image like Christ did on earth. Therefore, we are called to live as a new creation, one who is set apart and is a reflection of the God who created us and loves us

"We all, with unveiled faces, are looking as in a mirror at the glory of the Lord and are being transformed into the same image from glory to glory; this is from the Lord who is the Spirit." 2 Corinthians 3:18

DAY ONE: IMAGE OF GOD

Scriptures: Genesis 1:27, Psalm 139:13-16, Deuteronomy 7:6-9, Galatians 3:13-14

Key Verse: "I will praise you because I have been remarkably and wondrously made. Your works are wondrous, and I know this very well." Psalm 139:14

Life Question: What does it mean to be created in the image of God?

God created us in His image. He set apart the Israelites as His chosen people. As believers, we are called to bear God's image like Christ did on earth.

DAY TWO: IMAGE DISTORTED

Scriptures: Genesis 3:6-7, Exodus 32:1-6, Romans 1:22-25

Key Verse: "For all have sinned and fall short of the glory of God." Romans 3:23

Life Question: What have you allowed to distort the Image of God in your life? Do you find your identity in Christ or in the world

Sin distorted the Image of God in our lives, resulting in broken relationship with Him. The Israelites turned from God and created their own image and worshiped it.

DAY THREE: IMAGE RENEWED

Scriptures: Isaiah 53:1-12, 2 Corinthians 4:16-17, Colossians 3: 9-11

Key Verse: "Therefore, if anyone is in Christ, he is a new creation; the old has passed away, and see, the new has come!" 2 Corinthians 5:17

Life Question: Have you experienced renewal through the new covenant of Christ? What impact does that have on your daily life?

The Old Testament is filled with Scriptures pointing to the promise of a coming Messiah to fulfill the law and to be the ultimate sacrifice for sin. Jesus came as the prophesied new covenant to replace the old covenant made with the Israelites. Through Him, our relationship with the Father is renewed.

DAY FOUR: IMAGE SHARED

Scriptures: Matthew 9:36-38, Matthew 28:18-20, Acts 1:6-8

Key Verse: "Go, therefore, and make disciples of all nations, baptizing them in the name of the Father and of the Son and of the Holy Spirit." Matthew 28:19

Life Question: Who in your life needs to know that they were created in the image of God? What is keeping you from sharing?

Everyone is created in God's image. Jesus was the image of God on earth, and therefore is the perfect example of how to share this image with others. So, like Christ, we are to have compassion on them and share the love of God with them.

2022 FUGE CAMP MISSION OFFERING EMPHASIS

We encourage students to bring some extra money to contribute to the missions offering.

International Mission Board (IMB)

The Embera are a group of unreached peoples spread throughout the mountain and river regions of Colombia and Panama. As Animists, believing that all material objects are inhabited by Spirits that must be appeased, the Embera have lived in fear. As indigenous minorities, they have often been victims of tribal and organized crime violence. But, God loves the Embera and has not forgotten them.

During your time at FUGE Camps, you will hear first-hand testimonies of how the Lord has transformed Embera lives through a diverse missionary team that includes IMB missionaries, Colombian Baptist partners, Cuban and Panamanian missionaries and have an opportunity to give to the missions offering to support the work of these missionaries. Pray for the Embera people to experience life change and those serving and ministering to them.

North American Mission Board (NAMB)

Vergel and Kelsey Brown and their children moved to Portland, OR in 2019 to start a church. Many of the people the Browns first met in Portland had not only never heard of Jesus but had never even set foot in a church. They were genuinely curious about why the Brown family had moved to Portland and that curiosity opened the door to important and unexpected conversations.

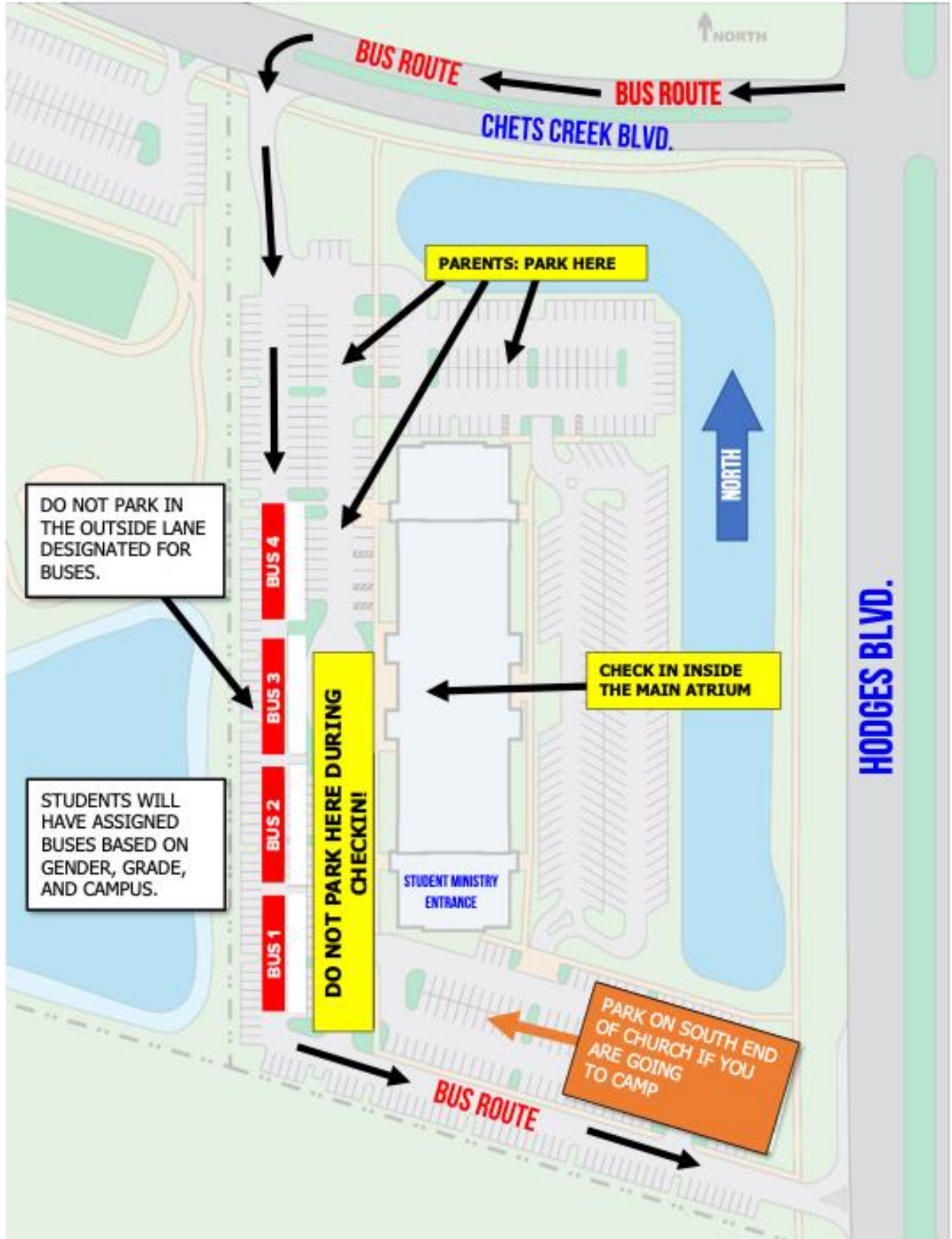
In 2020, Send Network, the North American Mission Board's church planting initiative, helped the Browns start Redemption Church in Northeast Portland. Now, the work of growing that new church has become a family affair. Vergil and Kelsey's children help teach Sunday School, run the live stream, set up chairs and signs, and welcome newcomers. Their oldest child even started a home Bible study with her friends from school. In a community that had no gospel witness, people in Northeast Portland are now being introduced to and are responding to the gospel.

When you give to the missions offering this summer at camp, you're helping missionaries like the Browns start new churches like Redemption Church. You're helping provide Bibles and chairs and microphones and everything else a new church needs to get up and running. Pray that lives will be changed in Northeast Portland and that Vergil, Kelsey, and their children will have everything they need to love their neighbors. Giving to this project will go a long way toward making that happen.

MFuge Local Missions

Every year a portion of the mission offering received at camp goes back to the local community through MFuge grants. Local ministries that we partner with can apply for the grant to continue ministry throughout the year. It is amazing to see how the Lord uses these ministries throughout the year.

DROP OFF & CHECK IN ON SUNDAY @ 6:00AM.



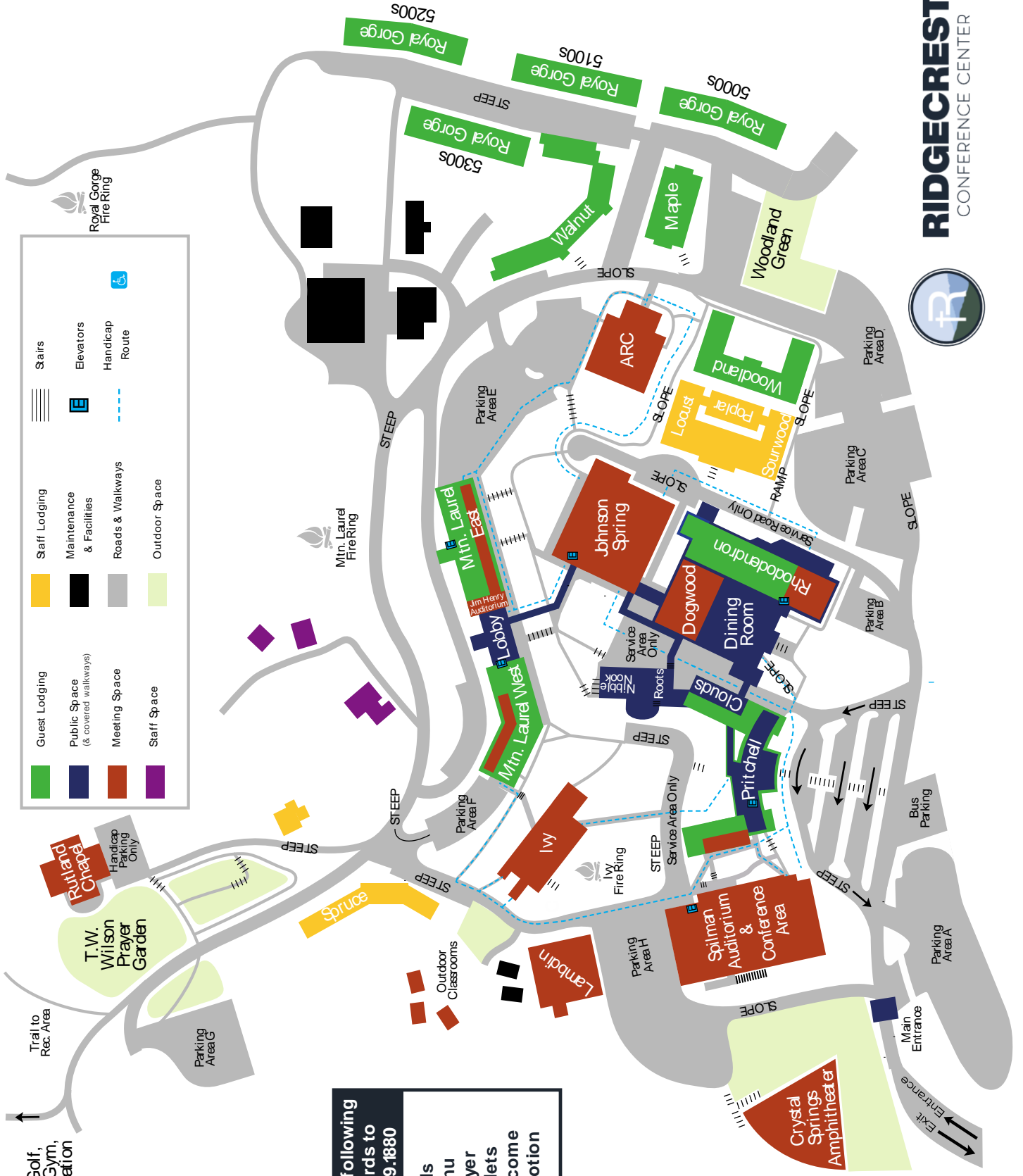
FINAL CAMP BALANCE WAS DUE:

JUNE 1, 2023

***IF YOU HAVE NOT PAID OFF YOUR CAMP BALANCE,
PLEASE DO SO TODAY. THANK YOU!***

SCAN TO GO TO LOG IN TO YOUR ACCOUNT & PAY:





	Guest Lodging		Staff Lodging		Stairs
	Public Space (& covered walkways)		Maintenance & Facilities		Elevators
	Meeting Space		Roads & Walkways		Handicap Route
	Staff Space		Outdoor Space		

To Miniature Golf,
Tennis Courts Gym,
Hiking & Recreation
Fields

Text the following keywords to 828.539.1880

- trails
- menu
- prayer
- outlets
- welcome
- devotion

Entrance
Exit